

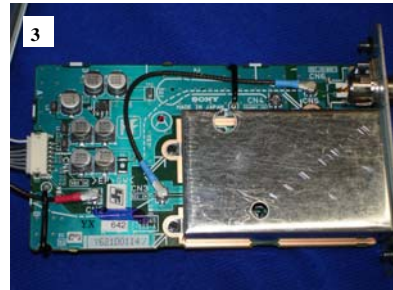
**Converting the Sony
CCU-D50 to SDI Mode**
Please note that changing the CCU-D50 to SDI
mode **DISABLES** the component outputs!



1 Remove the two screws from the SDI card located on the rear panel of the CCU-D50



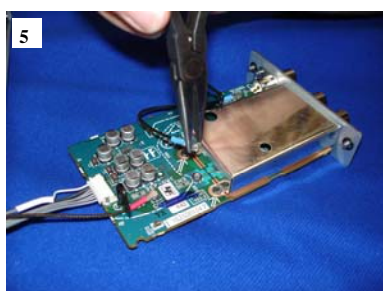
2 Carefully slide the SDI card out. Do not pull out too far as cable damage may occur



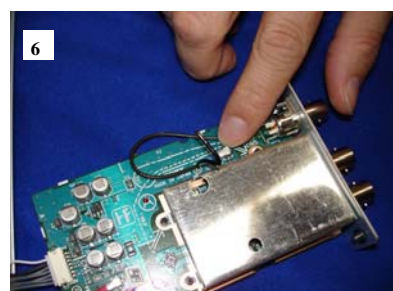
3 Component configuration shown (Factory Default)



4 Remove wire holder from top and bottom cable



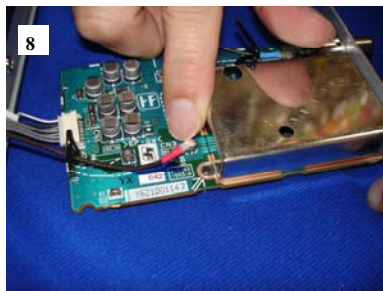
5 Remove blue wire from the bottom position (CN3)



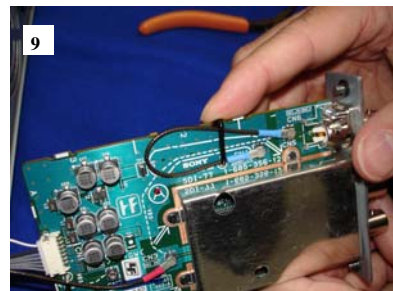
6 And install to (Dummy_CN) Position at top



7 Remove red wire from (CN 2) position



8 And install to (CN 3) position



9 Reinstall cable holders at top and bottom making sure cables are held securely



10 The SDI card should look like this when you are done.



11 Reinstall the SDI card back into the CCU and tighten both screws to secure.



12 On the front of the CCU-D50 make sure you change the dip switch #3 to the ON position to enable Digital Transmission



14 When the camera is connected and powered up you should see this solid green digital transmission light!